

Free Shuttle Bus

Shinagawa Station → Gotenyama Trustcity · Tokyo Marriott Hotel

	Weekday					Weekend & Holiday		
7	59							
8	07 47	15 55	23	31	39			
9	03 49	11 59	19	29	39	15	35	55
10	12	30	50			15	35	55
11	10	30	50			15	35	55
12	10	30	50			15	35	55
13	10	30	50			15	35	55
14	10	30	50			15	35	55
15	10	30	50			15	35	55
16	10	30	50			15	35	55
17	10	30	50			15	35	55
18	10	30	44	57		15	35	55
19	10	22	32	42	52	15	35	55
20	10	25	40	55		15		

Gotenyama Trustcity · Tokyo Marriott Hotel → Shinagawa Station

	Weekday						Weekend & Holiday		
7									
8	02 50	10 58	18	26	34	42			
9	06	14	22	32	42	52	00	20	40
10	02	15	34	55			00	20	40
11	15	35	55				00	20	40
12	15	35	55				00	20	40
13	15	35	55				00	20	40
14	15	35	55				00	20	40
15	15	35	55				00	20	40
16	15	35	55				00	20	40
17	15	35	55				00	20	40
18	15	35	50				00	20	40
19	03	15	27	39	57		00	20	40
20	15	30	45				00	20	
21	00								

The shuttle bus is operated by Tokyo Metropolitan Bureau of Transportation (Public bus).

[from Stations]

From Shinagawa Station

5 minutes by Free Shuttle Bus from both JR & Keikyū Line Shinagawa Station, Takanawa Exit or 10 minutes walk to the hotel.

From Kita-Shinagawa Station

Approximately 5 minutes walk from Keikyū Line Kita-Shinagawa Station.

[from Airports]

From Haneda Airport

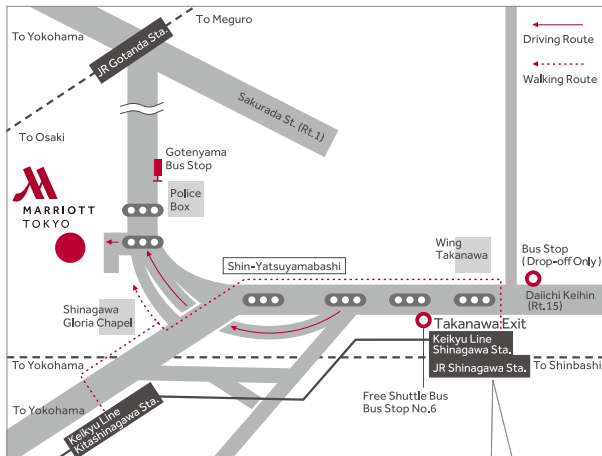
Approximately 20 minutes by Keikyū Line.

From Narita Airport

Approximately 70 minutes by Narita Express or 100 minutes by Airport Limousine Bus.

TOKYO MARRIOTT HOTEL

4-7-36 Kitashinagawa,
Shinagawa-ku, Tokyo 140-0001 Japan
T: +81.3.5488.3911



- (A) Free Shuttle Bus Bus Stop No.6
- (B) Free Shuttle Bus (Drop-Off Only)

