

Free Shuttle Bus

(from April 1, 2026)

Shinagawa Station → Gotenyama Trustcity · Tokyo Marriott Hotel

	Weekday	Weekend & Holiday
7	54	
8	22 52	
9	26	47
10	02 38	19 51
11	14	23 55
12		28
13		
14		40
15		16 51
16	26	26
17	00 36	01 36
18	08 41	
19	16	

Gotenyama Trustcity · Tokyo Marriott Hotel → Shinagawa Station

	Weekday	Weekend & Holiday
7		
8	00 30	
9	04 40	28
10	16 52	00 32
11		04 36
12		08 41
13		
14		20 55
15		30
16	04 39	05 40
17	14 47	15 50
18	20 55	
19	30	

The shuttle bus is operated by Tokyo Metropolitan Bureau of Transportation (Public bus).

[from Stations]

From Shinagawa Station

5 minutes by Free Shuttle Bus from both JR & Keiyou Line Shinagawa Station, Takanawa Exit or 10 minutes walk to the hotel.

From Kita-Shinagawa Station

Approximately 5 minutes walk from Keiyou Line Kita-Shinagawa Station.

[from Airports]

From Haneda Airport

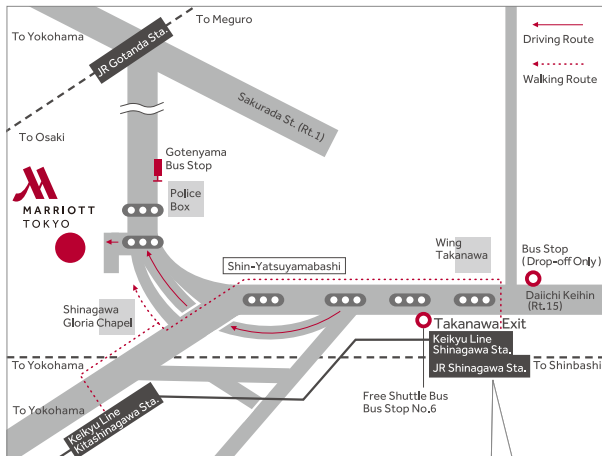
Approximately 20 minutes by Keiyou Line.

From Narita Airport

Approximately 70 minutes by Narita Express or 100 minutes by Airport Limousine Bus.

TOKYO MARRIOTT HOTEL

4-7-36 Kitashinagawa,
Shinagawa-ku, Tokyo 140-0001 Japan
T: +81.3.5488.3911



- (A) Free Shuttle Bus Bus Stop No.6
- (B) Free Shuttle Bus (Drop-Off Only)

